



Annual Impact Report

Fiscal Year (FY) 2023
(July 2022 - June 2023)

I had applied for disability, and it's a long process. I didn't know how much longer I could wait for assistance. I found The DONNA Foundation after doing an online search. They helped alleviate the stress by providing many resources to fund my daily expenses.

– Marisa

OUR VISION

A WORLD WHERE BREAST CANCER PATIENTS ARE FREED FROM ANY BARRIERS TO THEIR SUCCESSFUL TREATMENT

The DONNA Careline Program



2,050 PATIENTS

and their families served
(89% increase since 2020)



\$877,338

in financial services delivered including
\$53,500 in direct financial aid



of patients served have an annual income of

UNDER \$48k*

**Based on available data*

Our Case Managers Worked

59,430 ACTIVITIES

including phone calls, applications, email messages and other correspondence to secure support, and



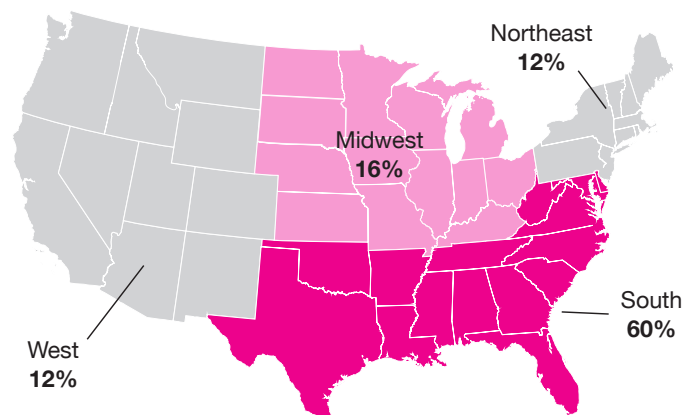
2,777 ISSUES WERE RESOLVED

Top Assistance Provided*

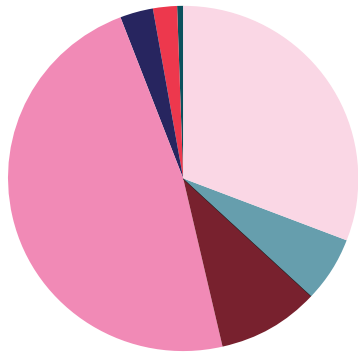
**Families may call with more than one issue*

Housing Payment Relief	671 cases
Utility Payment Relief	562 cases
Transportation to Treatment Support	224 cases
Food Financial Assistance Located	215 cases
Co-Pay Assistance Secured	140 cases
Deductible Payment Support	79 cases
Disability Eligibility	69 cases

Top Regions Where Our Families Live



The DONNA CareLine Program, cont'd.



- 47.73% Caucasian
- 30.91% African American
- 9.49% Hispanic/Latino
- 6.09% No Information Available
- 3.04% Blended Race
- 2.15% Asian
- 0.48% American Indian/Alaska Native
- 0.12% Native Hawaiian/Other Pacific Islander

DONNA Survivorship, Education and Awareness Program

9,966

CELEBRATED SURVIVORSHIP

by attending and supporting DONNA events, and crossing DONNA finish lines from 50 states and 10 countries

DONNA Fearless Race Series*	Runners
DONNA Marathon Weekend	5,397
DONNA National Marathon to Finish Breast Cancer	649
DONNA Half Marathon	2,676
FIS DONNA 5K presented by Equitable Advisors	1,545
DONNA Dash	128
DONNA 110 Ultra Marathon	6
DONNA 110 Mile-a-Day Challenge	188
Virtual Race Categories	205
Black Knight DONNA Mother's Day 5K	915

*In FY23, the organization continued to see growth toward pre-pandemic participation numbers. The DONNA 5K at TPC Sawgrass was not held in this fiscal year to transition the event to October with Breast Cancer Awareness Month.

Stakeholder Support

123+

Community & Corporate Partners

25

Volunteer D-Squad Ambassadors

174+

Fundraisers

56

Monthly Sustainer Donors

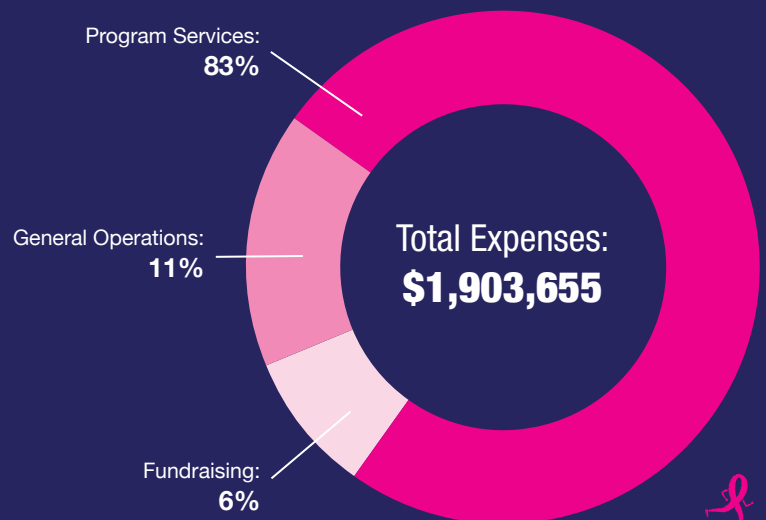
4,406

Volunteer Hours

FINANCIALS

The DONNA Foundation is proud to report a 3% increase in support and a 17% surge in event participation, reflecting the unwavering dedication of our donors and a growing community. While event registrations haven't fully rebounded from the pandemic, our commitment to the cause remains strong. Increased event expenditures (38%) are a necessary investment to deliver impactful programs that support those facing breast cancer. Despite these challenges, The DONNA Foundation maintains in strong financial health and remains dedicated to fiscal responsibility.

Total Support & Revenue: **\$1,676,983**



Learn more at:
TheDONNAFoundation.org/Impact

